

UNIT 42 - CNR ELLIS WAY & PARKLANDS BLVD



*Image for display purposes only, subject to change.

TOWNHOUSE - \$429,500

3 2+ 1

OFF PLAN SALES

Incorporating a stylish blend of sophistication and modern design to create a space to suit your busy lifestyle. These urban townhouses feature an open-plan layout filled with natural light and an undeniable feeling of space that harmonises perfectly with the relaxed lifestyle of the Sunshine Coast. Ascent is set in Meridan Plains surrounded by parkland, schools, shops and restaurants and minutes from the Sunshine Coast Health Precinct, Caloundra's Business District and only 100km north of Brisbane. Ascent is the perfect balance where relaxed living meets modern amenity.



COMPLETION ESTIMATE

DECEMBER 2019

GARAGE	21m ²
INTERNAL	109m ²
DECK	12m ²
TOTAL SIZE	142m ²

INITIAL DEPOSIT

10%



1st TENANT GUARANTEE



TENANT READY

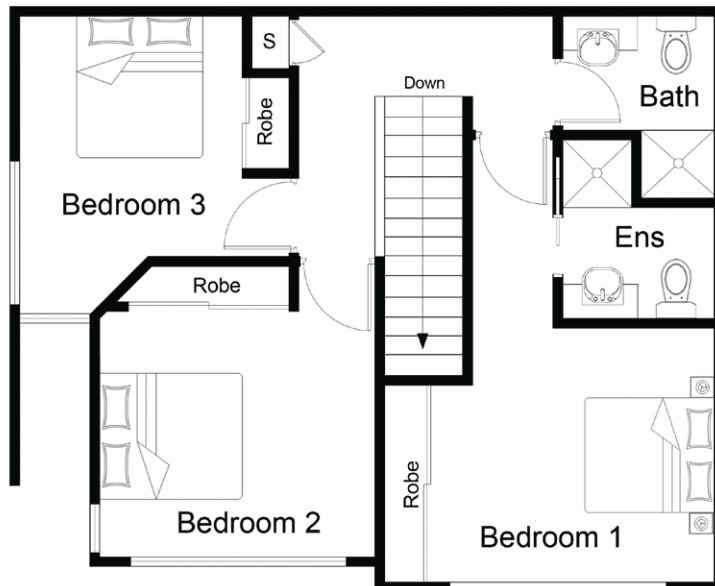


RESALE READY

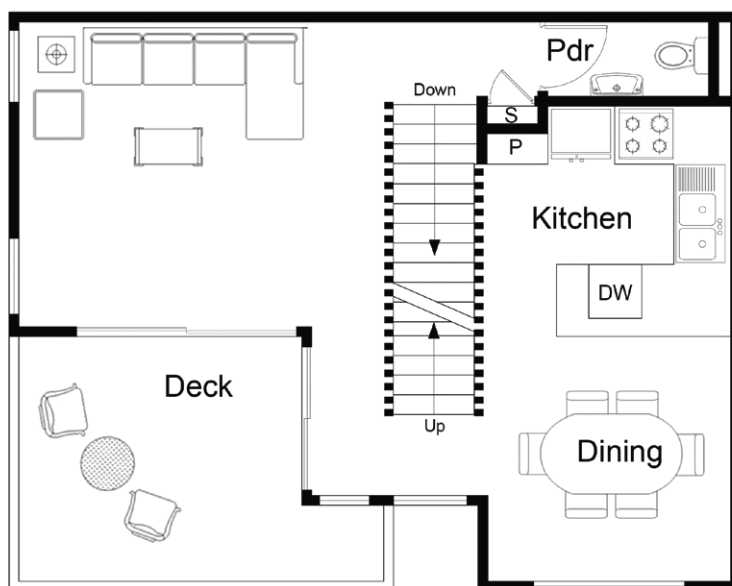
UNIT 42 - CNR ELLIS WAY & PARKLANDS BLVD

TYPE 6- THREE BEDROOM

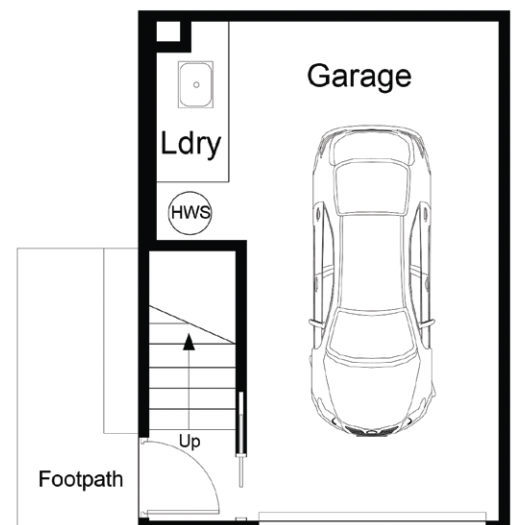
LEVEL 2



LEVEL 1



GROUND LEVEL



STAGE PLAN

